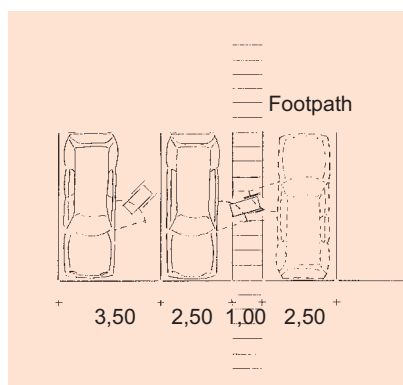
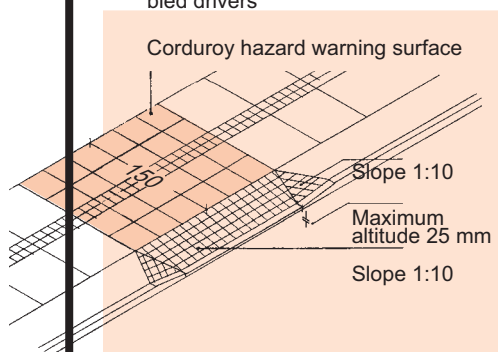


# Check list Barrier free access

The Danish  
Association of  
Persons with  
Disabilities



Parking space designated for disabled drivers



Dropped kerb

On account of persons with a walking disability it is important that the distance to the entrance is as short as possible.  
On account of wheelchair users there shall be no changes in level higher than 25 mm. Possible slopes: max. 1:20.

## PARKING SPACE

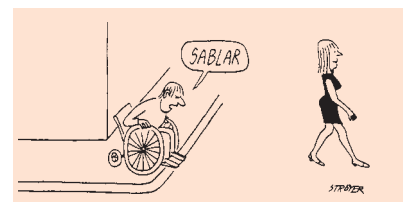
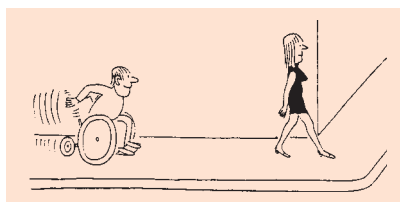
A parking space adapted to the needs of persons with disabilities shall be near the entrance: 3.5 m wide or next to an open, level, horizontal landing. Box vans might require extra length due to the lift (8.0 m).

## LOWERED KERB

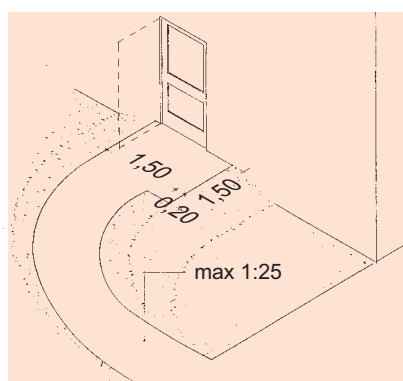
Remember lowered kerbstones in the access way between parking space, road, carriageway etc. and the entrance of the buildings.

A slope of max. 1:10 is acceptable for lowered kerbstones.

In order to notice the kerbstone, persons with visual impairment need approx. 25 mm change in level and tactile covering in connection with lowered kerbstones.



**Remember lowered kerbstones, also from pavements at all established and natural crossings!**



Grading of the ground

## BUILDING ACCESS

A regulation of the surrounding can be recommended to obtain level free access. Slope max. 1:25.

## COVERING

shall be firm and even. Sett paving and paving stones are unsuitable. On account of visually impaired persons, pavements shall include leading lines.

## BUILDING REGULATION, CHAPTER 2.6.3, PART 2 (FORMER CHAPTER 2.1.4 PART 2)

„ACCESS AND DRIVING-IN AREAS SHALL BE MADE IN SUCH A WAY THAT THE BUILDING CAN BE USED BY PERSONS WITH LIMITED MOVEMENT AND SIGHT ABILITY ...“

„Level differences in the access area shall be aligned in the surroundings or by a ramp, and ramps shall be supplied with steps with a rise of max 150 mm and a ground of minimum 300 mm ..“ „Hand rails shall be placed in a height of minimum 0.8 m above the ground level of the stair at both sides of stairs and ramps. In front of the entrance, a level area at the same level as the floor inside shall be provided for ...“

## SEE ALSO BUILDING REGULATION, CHAPTER 2.6.2, PART 3 (FORMER CHAPTER 2.1.3 PART 3)

## PTO!

Revised September 2002

## FOR FURTHER INFORMATION PLEASE SEE:

- Danish Standard: DS-3028 „Accessibility for everyone“
- Danish Standard: DS-105 „Outdoor areas for everyone“ ISBN 87-7310-165-6
- „Building regulation 95 – about accessibility requirements“ ISBN 87-90346-02-5 or [www.clh.dk/br95](http://www.clh.dk/br95)

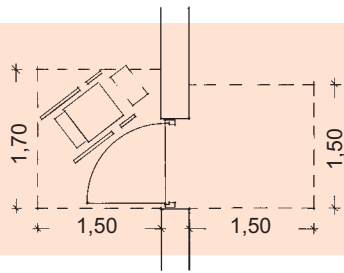


The Danish Association of Persons with Disabilities  
a society for everybody

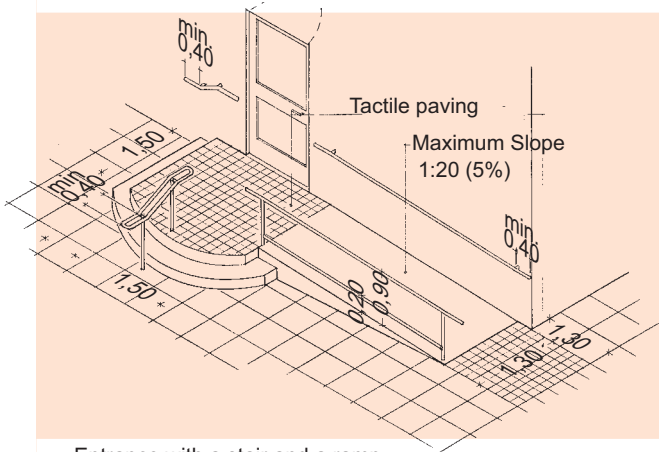
The Committee of Building, Environment and Traffic  
Hans Knudsens Plads 1A Tlf. (+45) 39 29 35 55  
2100 København Ø Fax (+45) 39 29 39 48  
Denmark [www.dhf-net.dk](http://www.dhf-net.dk)

# Check list Barrier free entrance

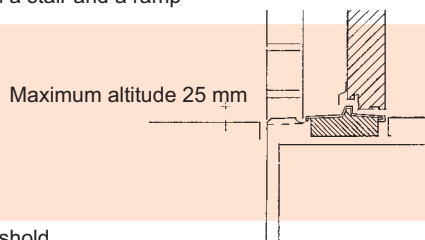
The Danish  
Association of  
Persons with  
Disabilities



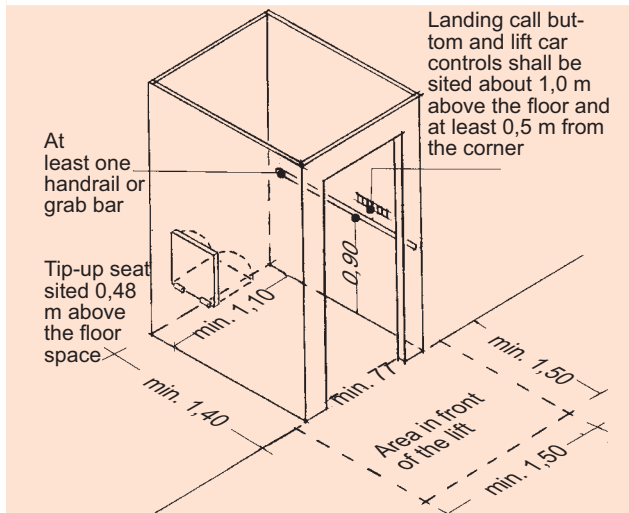
Level landing



Entrance with a stair and a ramp



Dropped threshold



Lift

Besides the access to a building, a correctly designed entrance without level differences shall be provided for.

The basis is here a level, horizontal space at the same level as the floor level inside, see „Landing“.

## LANDING

Outside the entrance door of a building and facility a horizontal area with a firm and level covering shall be provided for at a level similar to the floor level inside the facility. When the door is opening outwards, it is necessary with a larger horizontal area so that the door can open without touching the wheelchair. Automatic doors or a required pull/push force of max. 2.5 kg are required.

## RAMP

A possible level difference from the horizontal landing to the surrounding area can then be aligned in the surroundings (sketch on the back side of this paper) or by a ramp. Slope max. 1:20. At the beginning and end of a ramp a marking with tactile covering shall be provided for. Possible ramps shall be made in harmony with the surroundings.

## LOWERED DOORSTEP

To comply with BR requirement of max. (height) 25 mm doorstep, it might be necessary to lower the doorstep.

## STAIRS

shall have grip-friendly hand rails (dia. = approx. 40 mm). At the top and bottom of the stairs, a marking with tactile covering must be provided for. Top and bottom step shall be marked in a contrast colour. Open risers are not permitted on accessible stairs.

## NOTE!

Tilted scraper mats are illegal. A landing shall be provided for. Possible mats and gratings shall be lowered to level surface of surrounding areas. Mats of the rubber ring type are recommended. Coir mats are not suitable for wheelchair users.

## LIFTS

Besides the minimum measurement of 1.10 m (width) x 1.40 m (depth), the lifts shall have control buttons outside and within the lift cage. Control buttons shall be placed approx. 1.0 m above the floor and minimum 0.5 m from the corners. Door(s) shall be placed at the narrow end(s) of the lift. (If the doors are placed at a right angle to each other, the size of the lift shall be minimum 1.8 x 1.8 m.)

## BUILDING REGULATION 95 CHAPTER 4.2.1. ACCESS IN GENERAL

Point 2. At the entrance door an access without level differences to the units at the ground floor and to possible lifts shall be provided for. Immediately outside the entrance door a horizontal, plane landing in the same level as the floor shall be provided for. The landing shall have a size of minimum 1.5 x 1.5 m measured from the hinge side of the door. If the door opens outwards, the width of the landing shall be increased by further 0.2 m along the front of the building. Possible changes in level between the landing and the surroundings shall be aligned in the access area or by a ramp.

**SEE ALSO BUILDING REGULATION 95:**

Chapter 4.2.1. part 3, 4 and 7 – chapter 4.2.2. part 1-5 – chapter 4.2.3. part 3 and 4 – chapter 4.2.4. part 2-6 – chapter 4.3.4. part 1 and chapter 4.3.5. part 1.

In accordance with chapter 4.2.1. part 5 the above also applies to rebuildings.

**PTO!**  
**Revised September 2002**